

MASTERS IN CLINICAL RESEARCH

PADMASHREE INSTITUTE OF
CLINICAL RESEARCH (PICR)

FOSTERING INNOVATIVE MINDS ▲



PADMASHREE
INSTITUTE OF
CLINICAL RESEARCH

+91 9901 866 766

www.picr.in

principal.picr@padmashree.org

Padmashree Institute of Clinical Research
Padmashree Campus, # 149,
Kommaghatta Village, Sulikere Post,
Kengeri, Bangalore - 560 060



www.picr.in



► **About Padmashree Institute of Clinical Research**

Padmashree Institute of Clinical Research (PICR) stands as a beacon of excellence in the realm of Clinical Research education and training. With a commitment to fostering global standards in Clinical Research, PICR has established itself as a leader in preparing professionals who are equipped to meet the demands of a rapidly evolving healthcare industry.

At PICR, we are passionate and committed to using education to change student's lives. As a leading and experienced education provider, we specialized in offering comprehensive, specialized Masters in Clinical Research to suite the student's learning making them industry-ready.

With a strong focus on Clinical Research, Regulatory Affairs, Clinical Data Management, Anatomy, Drug Discovery & Development, Biostatistics, SAS Programming, CDISC, Medical Writing, Clinical / Medical Coding, IT Implementation, Medical Information System, Pharmacovigilance and Drug Safety and Personality Development for Industry.

► **Our Mission & Vision**

Empowering learners in Biopharma, Biotechnology, Healthcare, life- science, and IT sectors driving professional growth and expertise.

To be the preferred global Education Institution, fostering excellence in health care, life science, and IT industries by delivering transformative learning experiences.

► **Key Highlights**

- | | |
|------------------------------|----------------------------|
| ✓ LMS Support | ✓ Access to Job Portal |
| ✓ Placement Assistance | ✓ Offline/Online Classes |
| ✓ Pre Placement Sessions | ✓ Soft-Skill Sessions 24/7 |
| ✓ 1:1 Interview Preparations | ✓ Student Support |



Masters in Clinical Research

► 24 Months/ 2 Semesters each year

Roadmap





► Masters in Clinical Research

Affiliated to **Rajiv Gandhi University of Health Sciences (RGUHS)**

With our carefully designed programs, start a path that will change your life in the field of Clinical Research. Explore our extensive selection, customized and tailored to meet your educational needs.

Masters in Clinical Research course aims to provide students with a theoretical and practical understanding of the issues involved in the **“Study design, conduct, monitor, document, audit, analysis and interpretation”** of Clinical trials of health interventions.

Students will be trained to develop skills to scrutinize information, to critically analyze and carry out research and to communicate effectively

CERTIFICATION (24 MONTHS)

Core concepts, hands-on experience in data handling, and immediate applicability in the Clinical Research field.

ADVANCED MODULES

Focused modules, case studies, Global Regulatory and Ethics understanding, Data management insights, Global case studies.

HANDS-ON-EXPERIENCE

Comprehensive modules, practical assignments, hands-on-projects, site visits, internships, and guest lecturers.

► Modules Covered

- ✓ Introduction To Clinical Research
- ✓ Drug Discovery & Development
- ✓ Human Physiology & Diseases
- ✓ Pharmacovigilance
- ✓ Clinical Data Management & SAS
- ✓ Genetics & Molecular Biology
- ✓ Medical Writing
- ✓ Regulatory Affairs
- ✓ Biostatistics
- ✓ Soft Skills & Interview Preparation





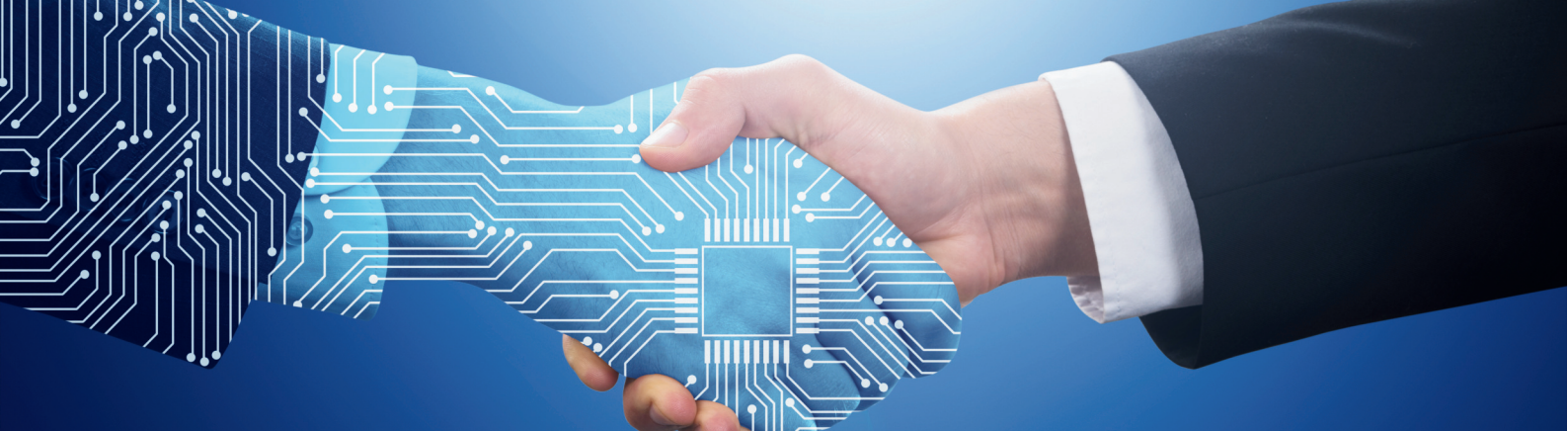
Eligibility Criteria

The Clinical Research course is open for anyone keen on enhancing their knowledge and skills in the field of clinical research. People from various backgrounds can enroll in the course, such as:

- ✓ Professional healthcare courses: MBBS, BDS, BHMS, BUMS, BAMS, BPT, BSc Nursing.
- ✓ Life science courses: BSc and MSc in life sciences, covering subjects like biology, chemistry, biochemistry, microbiology, biotechnology, Biomedical Science, Botany, Zoology, and related fields
- ✓ Pharmaceutical courses: Pharm D, B Pharm, M Pharm.
- ✓ A recognized bachelor's degree in any Health Science subject with minimum of 50% marks

Job Opportunities

- Clinical Research Associate (CRA)
- Drug safety associate (DSA)
- Clinical trial assistant (CTA)
- Clinical Data Associate(CDA)
- Regulatory Affairs Specialist
- Pharmacovigilance Specialist
- Clinical Research Co-ordinator
- Medical Writer
- Clinical research assistant
- Pharmacovigilance associate
- Quality Assurance Specialist
- Medical Affairs Specialist
- Regulatory Associate
- Medical Coding Associate



Potential Employers for Your Career

► Unlocking Professional Opportunities: Your Path to Establishing Connections with Prospective Employers for a Successful Career Ahead!

 **IQVIA**

 **accenture**

AstraZeneca 

Cipla

PPD

 **IKS**
HEALTH

Syneos
Health 

Cognizant

SIEMENS


SUN
PHARMA


novo nordisk®

 **OPTUM**™

 **BIOCLINICA**

 **SymphonyAI**

parexel.

 **Pharm-Olam**
Helping Create A Healthier World





HOW TO REACH US



WWW.PICR.IN



+91 9901 866 766



PRINCIPAL.PICR@PADMASHREE.ORG



PADMASHREE INSTITUTE OF CLINICAL RESEARCH
PADMASHREE CAMPUS, # 149, KOMMAGHATTA
VILLAGE, SULIKERE POST KENGERI, BANGALORE -
560 060



PADMASHREE
INSTITUTE OF
CLINICAL RESEARCH